

# FRAME IP54

410

Outdoor lamps



\* - EXPLANATION SHORTCUT PAGE 2 (E)



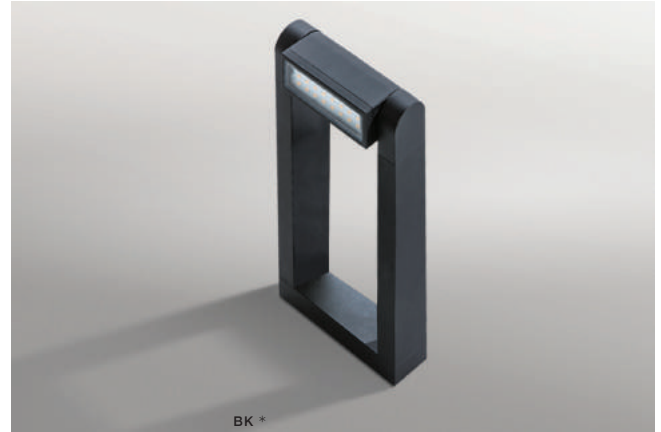
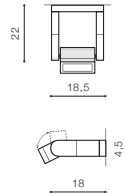
FRAME WALL

LED integrated

|                         |                    |                 |
|-------------------------|--------------------|-----------------|
| voltage: 230V           | LED 8W 800lm 3000K |                 |
| IP54                    |                    |                 |
| technical specification | installation place | beam angle: 90° |

COLOUR / NEW INDEX NO.

- BLACK (BK) . . . . . **AZ4308**
- DARK GREY (DGR) . . . . . **AZ2132**
- BRIGHT GREY (BGR) . . . . . **AZ2133**



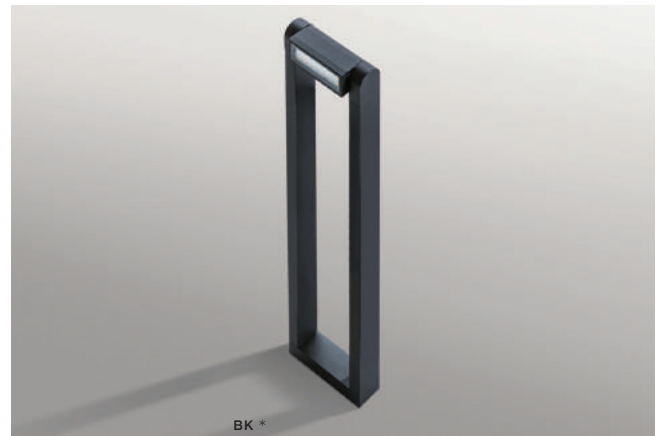
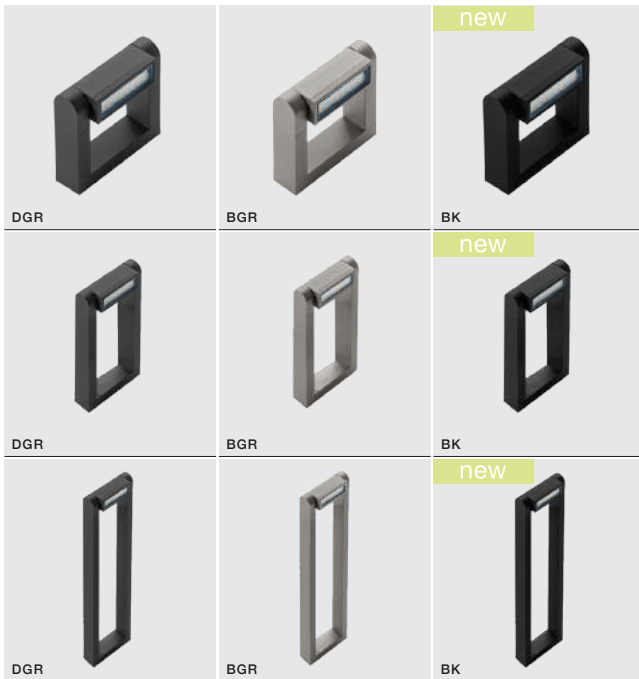
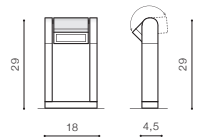
FRAME SPIKE

LED integrated

|                         |                    |                 |
|-------------------------|--------------------|-----------------|
| voltage: 230V           | LED 8W 800lm 3000K |                 |
| IP54                    |                    |                 |
| technical specification | installation place | beam angle: 90° |

COLOUR / NEW INDEX NO.

- BLACK (BK) . . . . . **AZ4307**
- DARK GREY (DGR) . . . . . **AZ2128**
- BRIGHT GREY (BGR) . . . . . **AZ2129**



FRAME 70

LED integrated

|                         |                    |                 |
|-------------------------|--------------------|-----------------|
| voltage: 230V           | LED 8W 800lm 3000K |                 |
| IP54                    |                    |                 |
| technical specification | installation place | beam angle: 90° |

COLOUR / NEW INDEX NO.

- BLACK (BK) . . . . . **AZ4305**
- DARK GREY (DGR) . . . . . **AZ2130**
- BRIGHT GREY (BGR) . . . . . **AZ2131**

